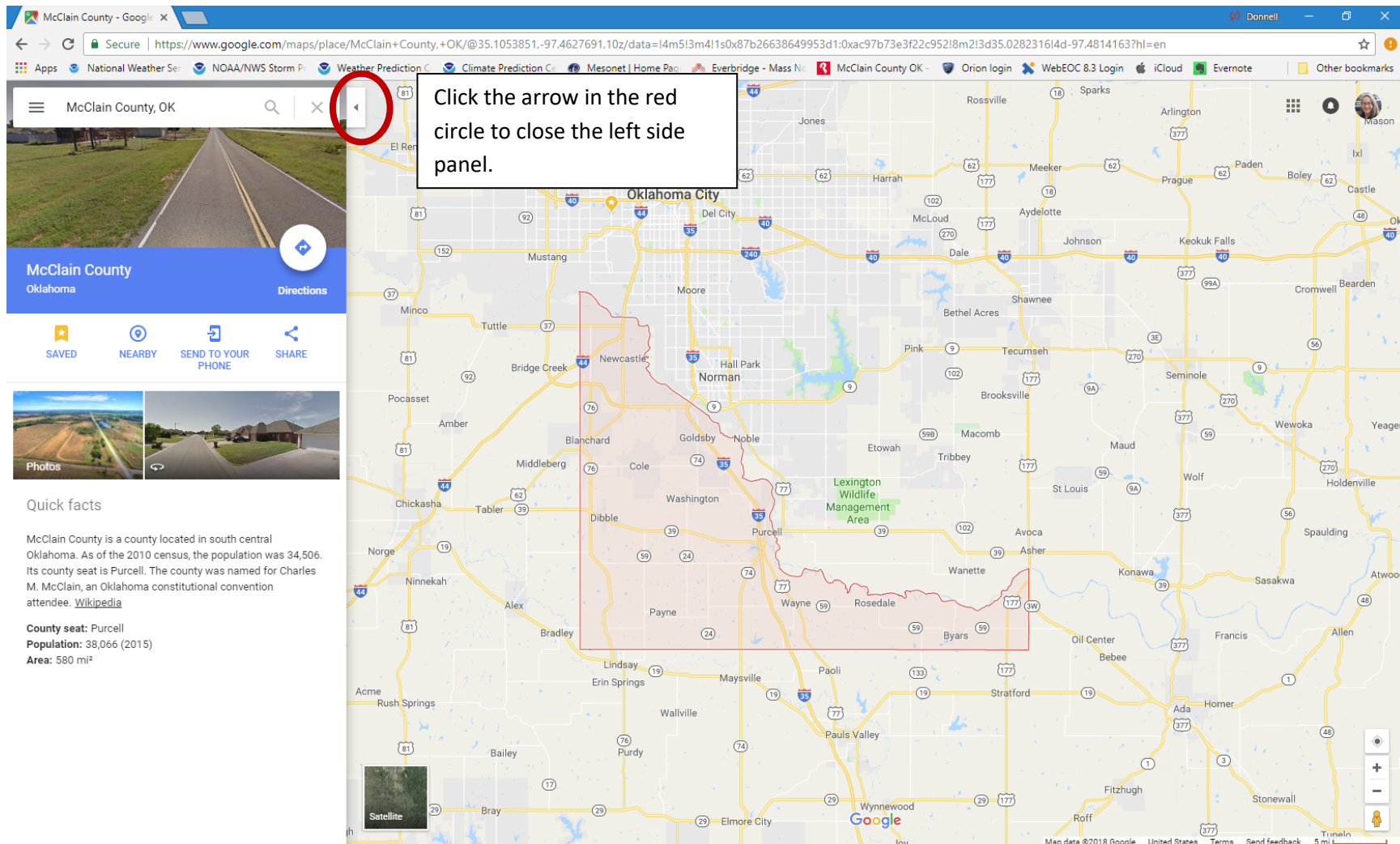
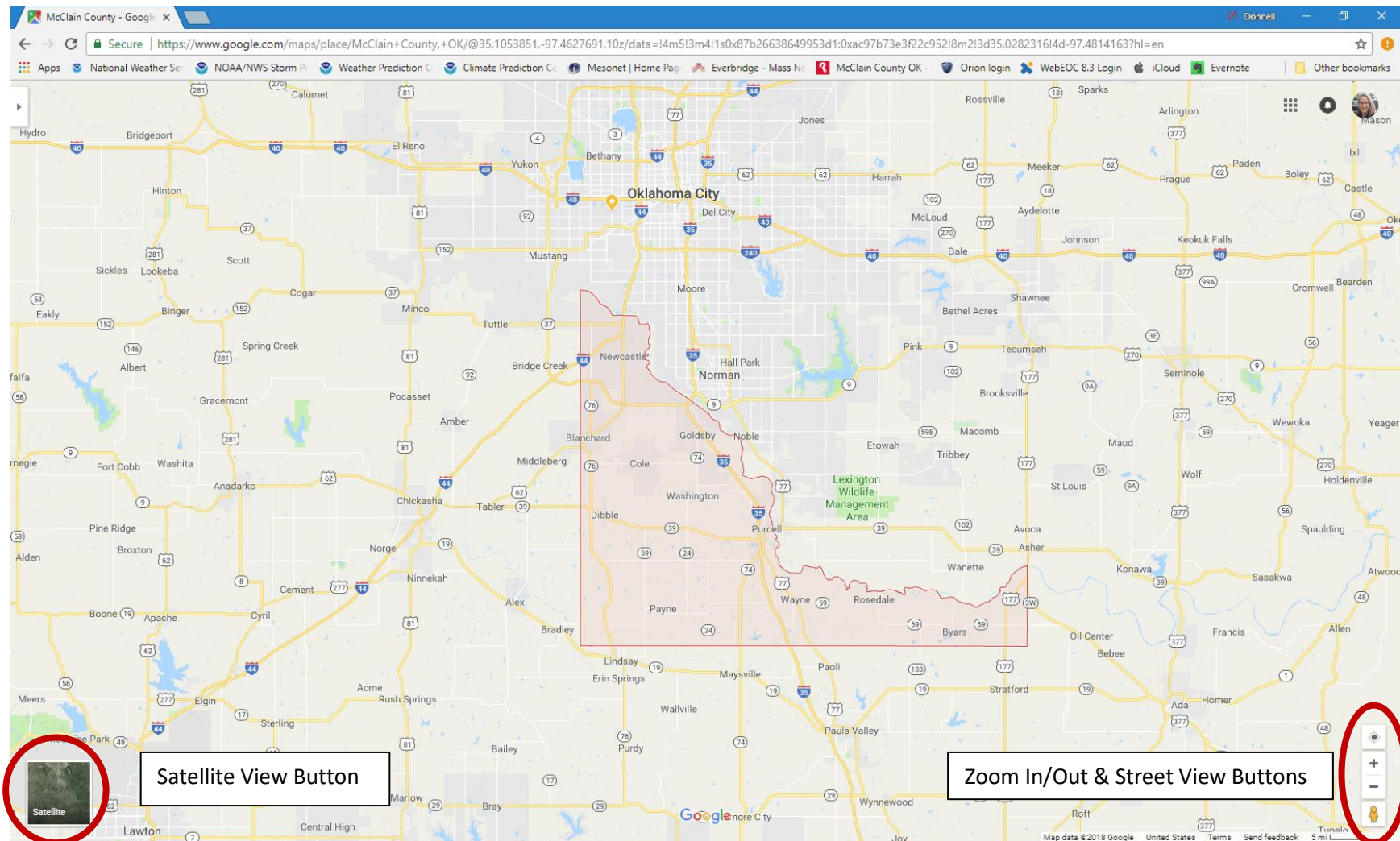


Finding the latitude and longitude for your location on Google Maps



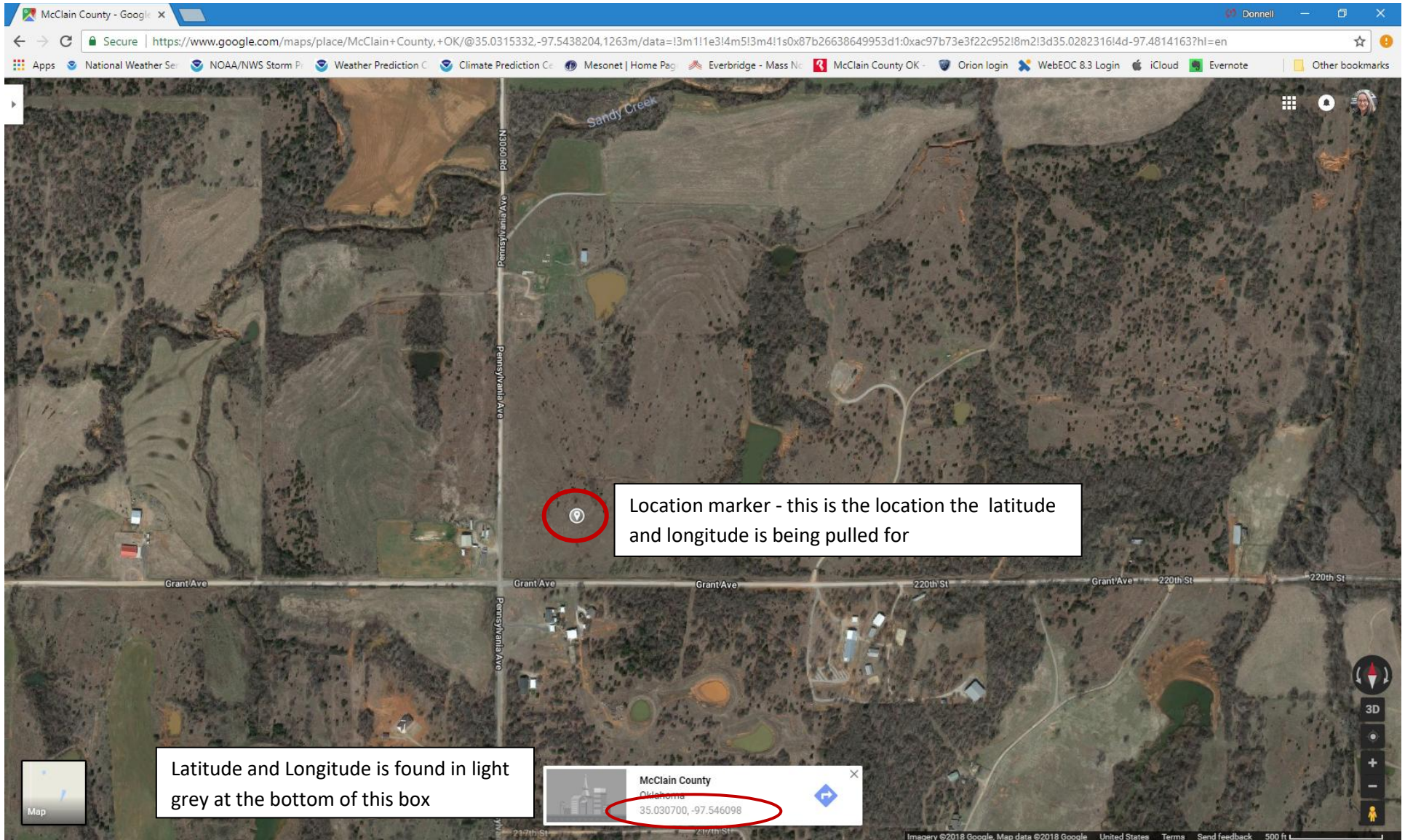
Once the map opens it will look like this. The outlined area on your map is McClain County. Close the left side panel by tapping the arrow circled in red in the image above.



NAVIGATION - To zoom in and out, use the scroll wheel or use the [+] and [-] signs at the bottom right of the screen. To move the map around, left click and hold to drag or move the map around.

STREET VIEW - Street view allows you to look around an area as though you were standing there on the street. To use street view click and drag the yellow person below the zoom buttons to the location you want to look around. To exit street view click the [X] at the top right of the screen.

SATELLITE VIEW - To turn on satellite view click the square on the bottom left of the screen. To leave satellite view click the square again. Satellite view allows you to see the area as it is. Satellite images may be old and may not show everything as it is today, but in most cases it will make the area more recognizable to you. We highly recommend using satellite view when you are getting your latitude and longitude.



GETTING LATITUDE AND LONGITUDE - To get the latitude and longitude of a location zoom in to the location and click the location a box will appear (normally at the bottom of the screen) with a location and the latitude and longitude will be in light grey under the location name. The Floodplain Administrator needs a latitude and longitude for primary structure of your development. You must provide the exact latitude and longitude for where you will place structures as your application approval or denial is based on an exact location. Write down the latitude and longitude for application.